

American Association of Diabetes Educators (AADE)

- Overview of AADE & MI CB of AADE
- Update on AADE current priorities
- Update of AADE advocacy
- Overview of recent A1c guideline recommendations from the American College of Physicians

Elaine Lober RN, BSN, CDE
2018 Chair, Michigan Coordinating
Body of AADE

These slides are the property of the presenter. Do not duplicate without written consent.

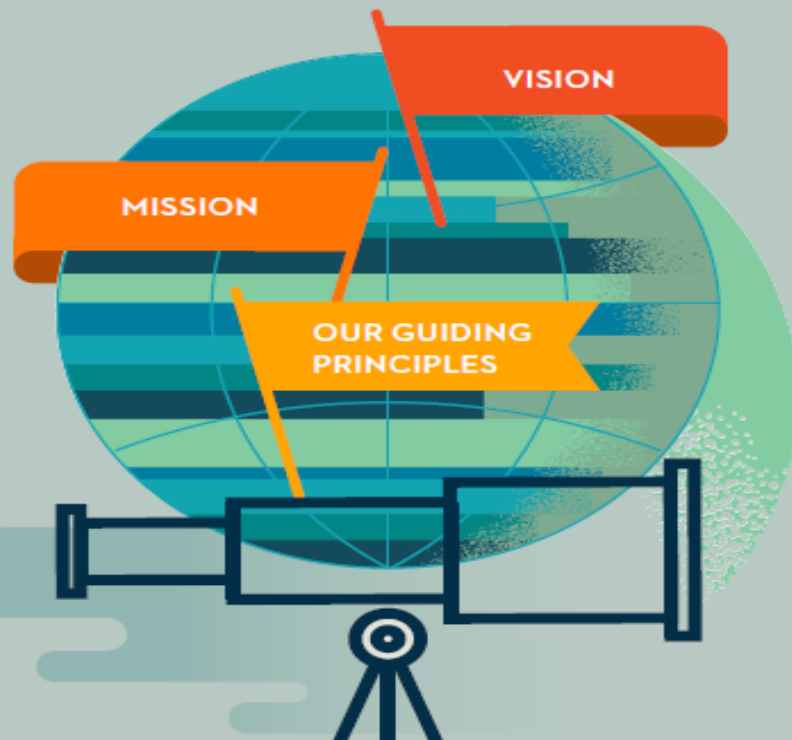
AADE

American Association of Diabetes Educators

Founded in 1973, the American Association of Diabetes Educators is the leading association for diabetes educators. With more than 14,000 members, AADE advocates on behalf of diabetes educators and the patients they serve. We also work to ensure the professional growth of our members and promote widespread recognition of the benefits of diabetes education.

These slides are the property of the presenter. Do not duplicate without written consent.

VISION & MISSION



VISION

Optimal health and quality of life for persons with, affected by or at risk for diabetes and related chronic conditions.

MISSION

Empower diabetes educators to expand the horizons of innovative education, management and support.

OUR GUIDING PRINCIPLES:

- The person with, affected by or at risk for diabetes is at the center of the diabetes care team.
- The diabetes educator is an essential member of the diabetes care team.
- Evidence is the basis of our science and practice.
- Quality diabetes prevention and diabetes self-management education and support should be accessible to all individuals.
- Diabetes self-management education and support must evolve through innovation to reach its greatest impact.

KEY PRIORITIES



DIABETES EDUCATOR EXCELLENCE

Lead the development of innovative education, knowledge resources, and services for professional development and career enhancement.



VALUE-BASED SERVICES FOR POPULATION HEALTH MANAGEMENT

Champion the positive outcomes and cost benefits of diabetes self-management education and support provided by qualified diabetes educators.



DIVERSITY & ACCESS

Expand and diversify the evolving diabetes educator workforce to address the increasing demand for and access to diabetes self-management education and support.



THE FUTURE

Shape, design, evaluate and drive opportunities related to technology and connected health to improve outcomes.

EMERGING ROLES AND PROFESSION OF DIABETES EDUCATION AND MANAGEMENT

STRATEGY

DESIGN RESOURCES TO ADDRESS THE EMERGING ROLES AND PRACTICE OF DIABETES EDUCATION AND MANAGEMENT ACROSS ALL PRACTICE LEVELS.

OUTCOMES

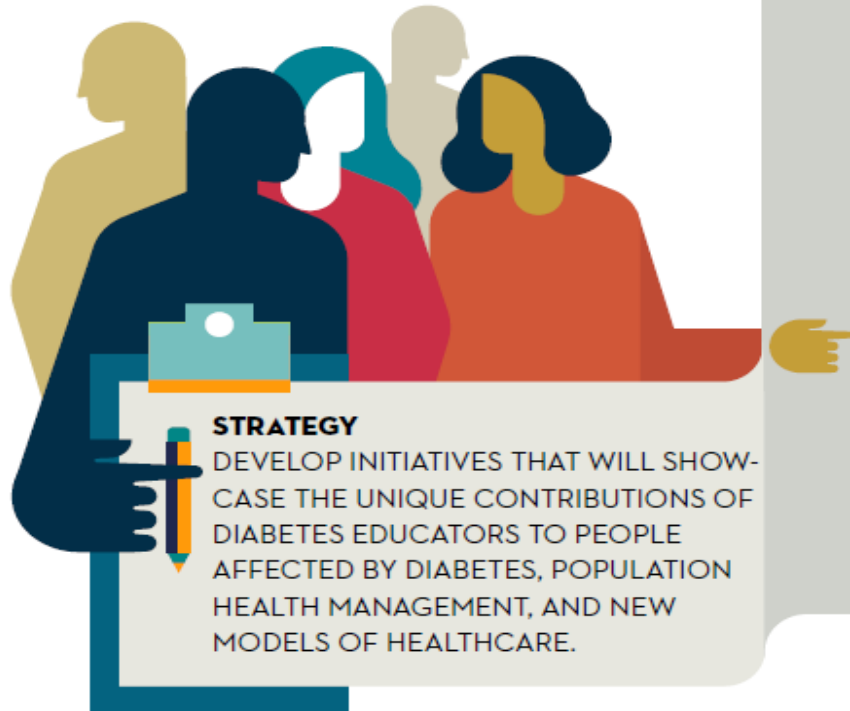
Membership, education and certification needs and plans to address those needs.

A cutting edge digital body of knowledge to drive career advancement.

The need to develop a practice specialty within academic settings.



POPULATION HEALTH MANAGEMENT AND NEW MODELS OF CARE



OUTCOMES

Sample models for implementing best practices in existing and emerging models of care.

A research agenda that continues to support the value of diabetes self-management education and support.

AADE systematic review outcomes to increase awareness of the value of the diabetes educator and diabetes self-management education and support.

DIVERSITY IN MEMBERSHIP, PRODUCTS AND SERVICES

STRATEGY

ADDRESS THE NEED FOR DIVERSITY IN OUR
MEMBERSHIP, PRODUCTS AND SERVICES.

OUTCOMES

AADE resources, products and membership reflecting
broad diversity across generations, ethnicities,
disabilities and cultures.



ACCESS TO DIABETES SELF-MANAGEMENT EDUCATION AND SUPPORT

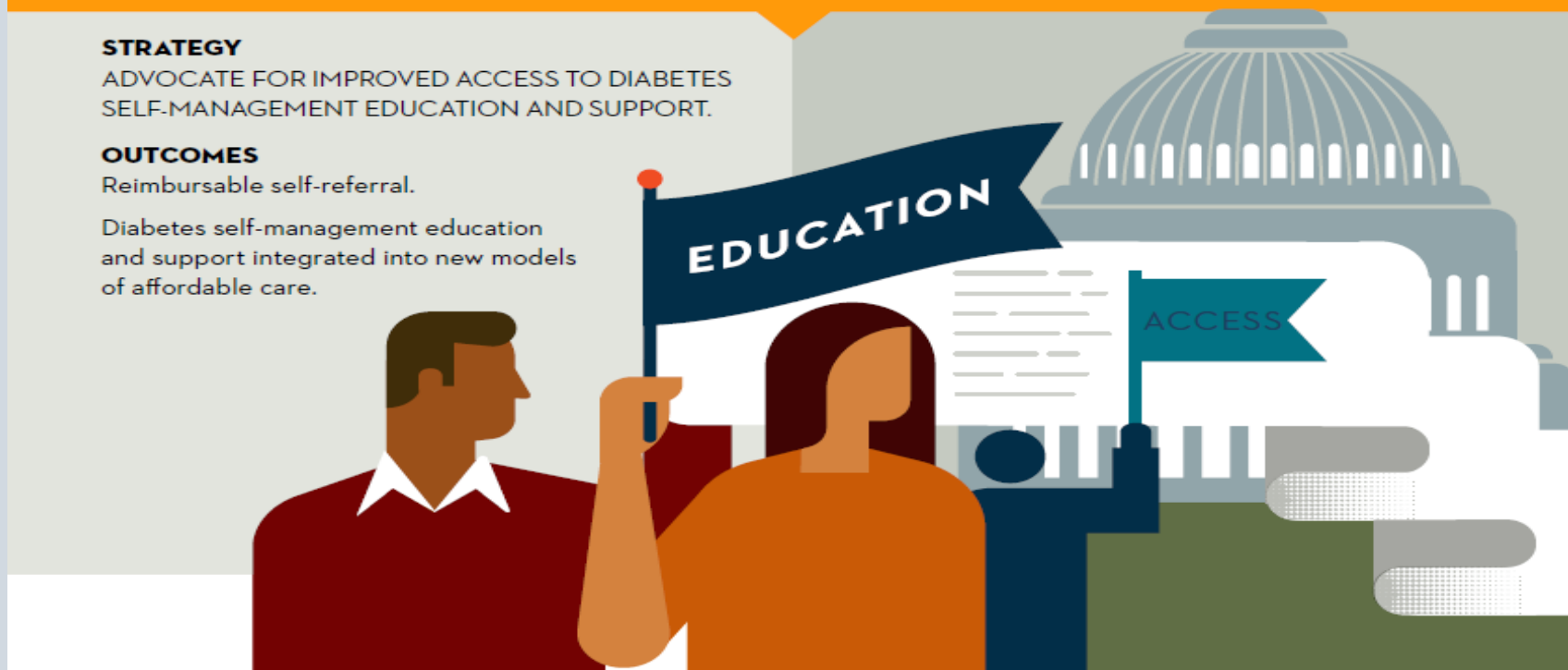
STRATEGY

ADVOCATE FOR IMPROVED ACCESS TO DIABETES
SELF-MANAGEMENT EDUCATION AND SUPPORT.

OUTCOMES

Reimbursable self-referral.

Diabetes self-management education
and support integrated into new models
of affordable care.



DIGITAL TECHNOLOGY AND CONNECTED HEALTH ENVIRONMENT

STRATEGY

EXPAND AND LEVERAGE TECHNOLOGY AND THE CONNECTED HEALTH ENVIRONMENT AS A MEANS TO ENGAGE AND SUPPORT ALL OF OUR STAKEHOLDERS.

OUTCOMES

A technology roadmap that advances the profession and fosters long-term success.

AADE-defined opportunities relative to virtual care delivery and clinical decision support models through collaboration with external partners.

Virtual models of prevention and education in accreditation and reimbursement.



GLOBAL INITIATIVES AND PARTNERSHIPS

STRATEGY

EXPLORE OPPORTUNITIES TO EXPAND THE IMPACT OF DIABETES SELF-MANAGEMENT EDUCATION AND SUPPORT THROUGH GLOBAL INITIATIVES AND PARTNERSHIPS.

OUTCOMES

A global strategy and an international market approach.



LONG-TERM VISION FOR AADE

STRATEGY

DETERMINE A LONG-TERM VISION FOR THE
DIABETES EDUCATION PROFESSION

OUTCOMES

A long-term vision that will grow AADE and
ensure continuity of purpose.





These slides are the property of the presenter. Do not duplicate without written consent.

MI CB AADE

Governing positions: All Volunteer

- Chair, Chair-Elect, Past-Chair, Finance, Secretary, Professional Development, Marketing, Membership, Advocacy, Local Networking Group Leaders, Adm. Assist.(paid)

Liaisons:

- ADA
- JDRF
- MDHHS
- DPAC/MDRTC

MI CB

AADE Leadership training in January

MI CB Leaders training in February

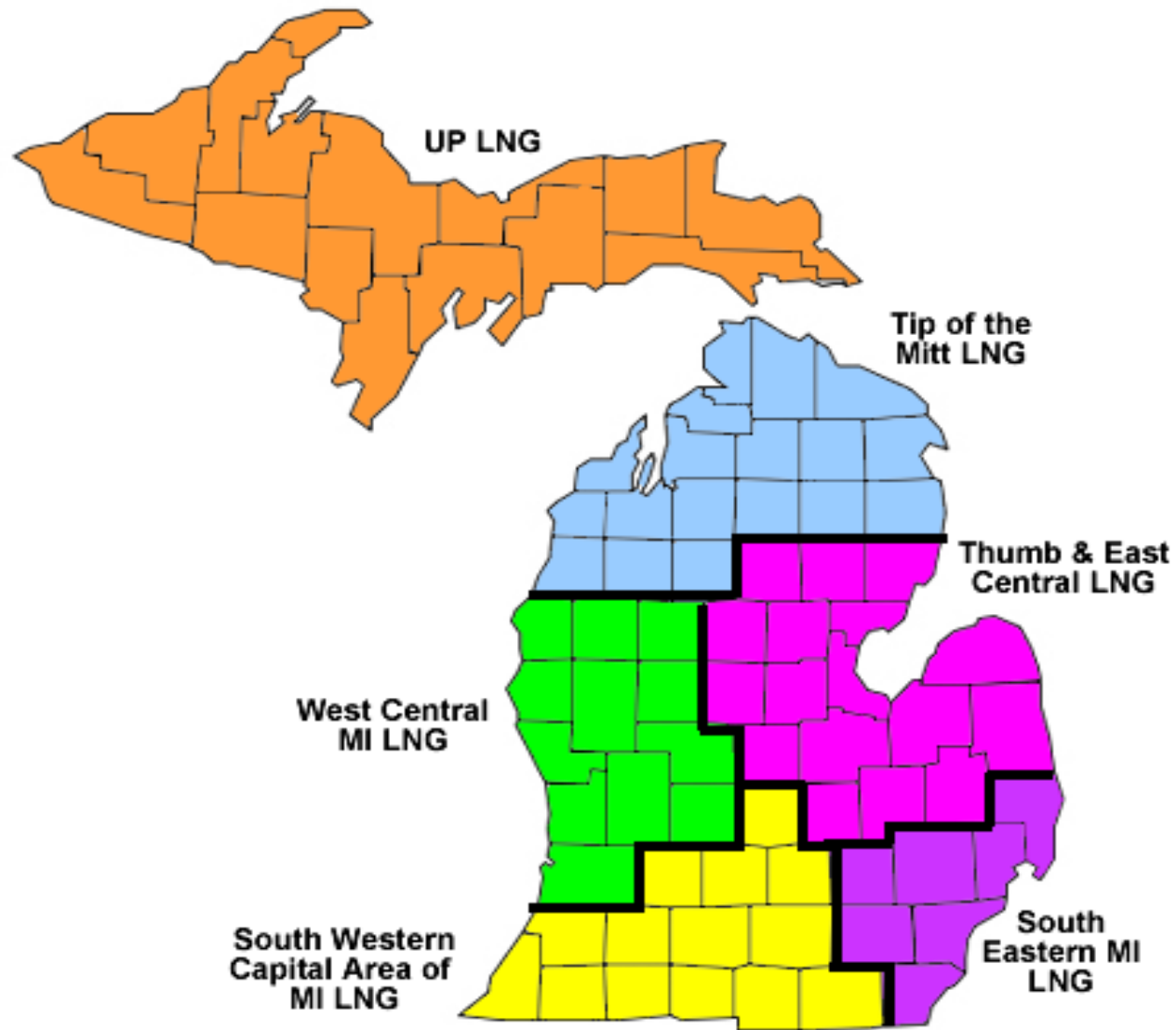
- Roles/Responsibilities
- Input from Liaisons
- Development of Strategic plan based on AADE

My AADE Network

LNG activities

Advocacy

Fall Conference



These slides are the property of the presenter. Do not duplicate without written consent.

MI CB AADE Strategic Plan - 2018



2018 Strategic Plan: Supporting the AADE Vision: Optimal health and quality of life for persons with, affected by or at risk for diabetes and related chronic conditions & Mission: Empower diabetes educators to expand the horizons of innovative education, management and support. Embracing and encouraging the movement towards language that is consistent with the empowerment approach for diabetes care and education.

High Impact/Low Energy

- Annual meeting for LNG leaders training
- AADE Leadership training
- AADE Advocacy training
- LNG events/Calendar of events/Coffee Talk
- Present/introduce AADE at student organization meetings
- Encourage Network use by members
- DANA promotion

High Impact/High Energy

- Connect with vendors to increase revenue
- Fall State Conference/Bay City
- "Save the Date" postcards
- Catch new members going forward with information on Network communications

Low Impact/Low Energy

- Organize event booth (JDRF)
- Visit other AADE state networks online
- Social Media? Facebook, Twitter
- Promote AADE on other professional organization's websites
- DEOY award

Low Impact/High Energy

- Consider representation/marketing at healthcare professional meetings: ie AACE, Pharmacist Association, MI Primary Care Assoc.
- NCBDE mentor program

These slides are the property of the presenter. Do not duplicate without written consent.



The Use of Language in Diabetes Care and Education

AADE & ADA Joint Statement 2017

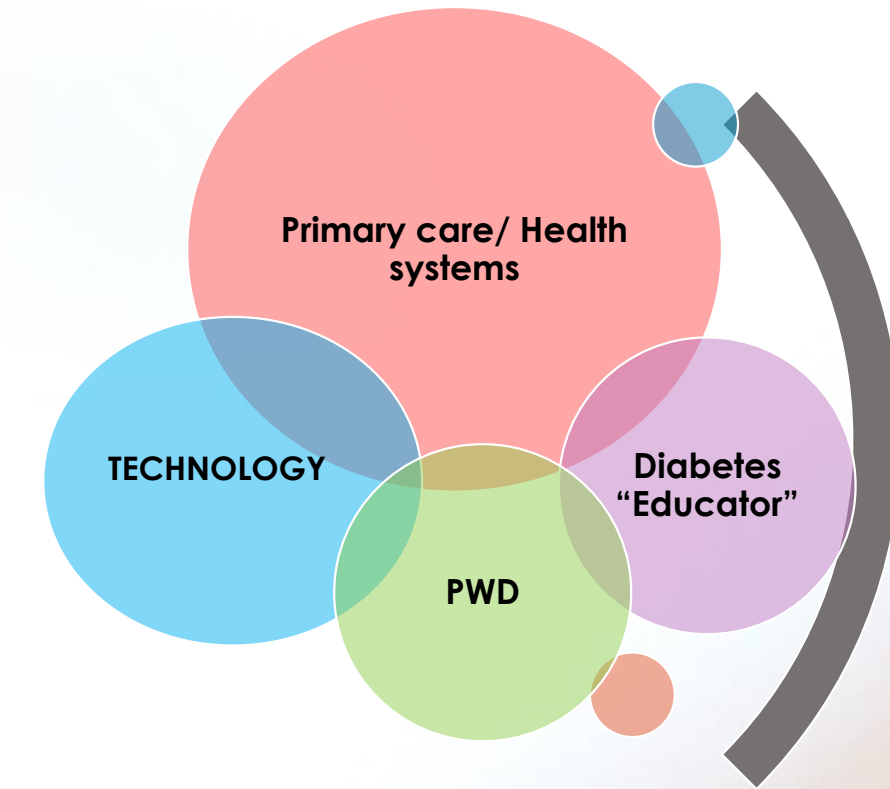
- “Health care professionals have an opportunity to reflect on the language used in diabetes and adapt strengths-based, collaborative, and person-centered messages that encourage people to learn about and take action to manage this complex disease.”



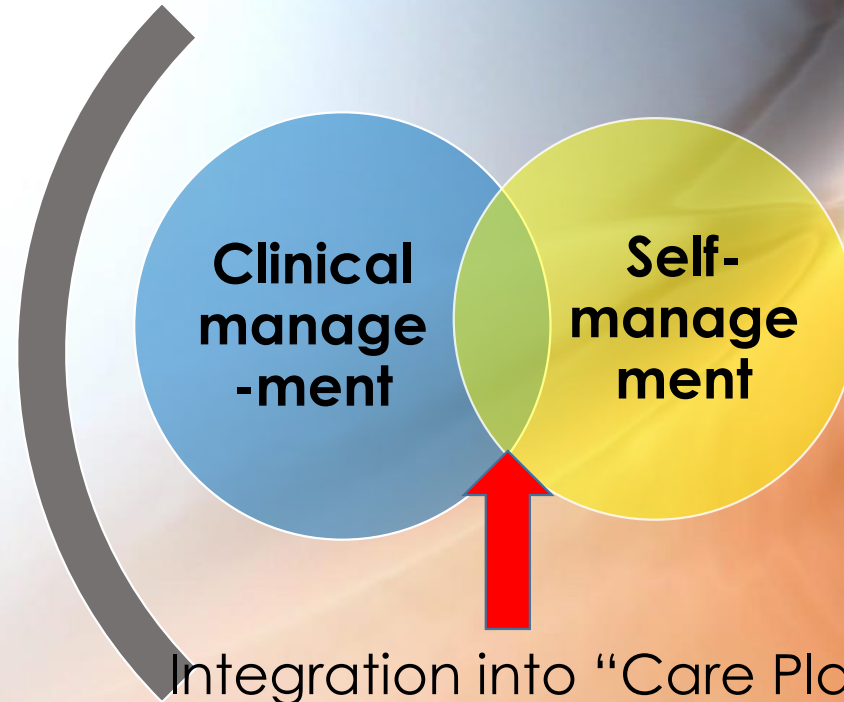
AADE Updates Moving Forward

Subtitle

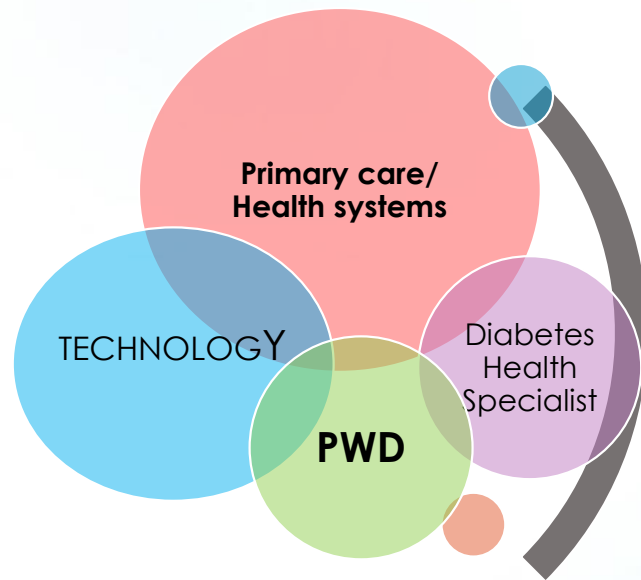
These slides are the property of the presenter. Do not duplicate without written consent.



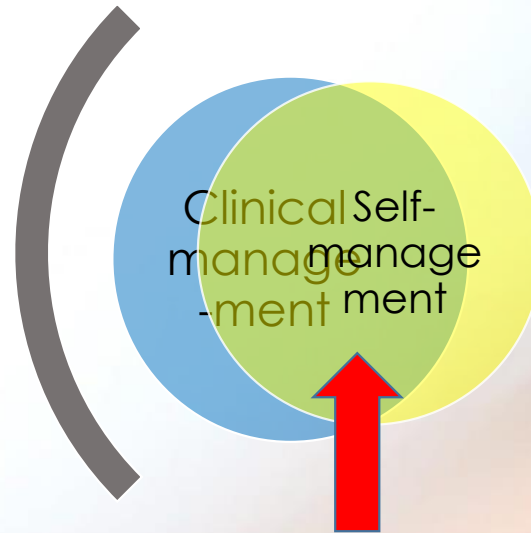
Fragmented care
Rely on "referrals" or Forward
thinking practices/systems



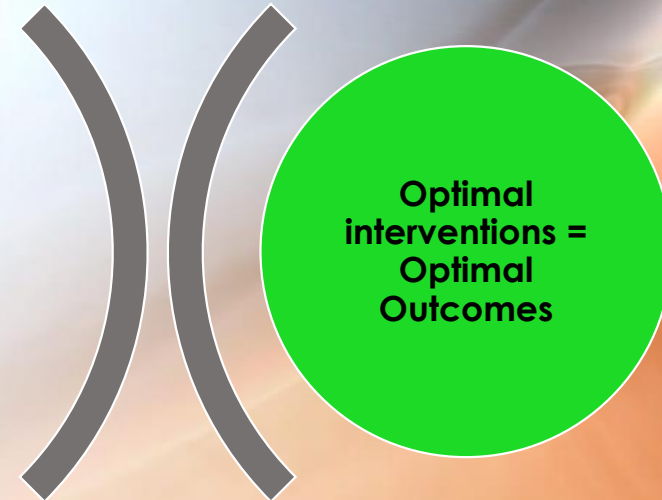
Integration into "Care Plans"
Claim our Domain and
Improve all Outcomes and
the Healthcare experience



Fragmented care



Healthcare experience



Holistic patient-centered
health promotion, prevention
and ongoing support

These slides are the property of the presenter. Do not duplicate without written consent.



Diabetes Educator is more than “Education”

These slides are the property of the presenter. Do not duplicate without written consent.

Thrive in the Future



These slides are the property of the presenter. Do not duplicate without written consent.

Strategies Supporting the Vision



Technology



Leveraging technology driven diabetes care, education and support.

We will be technology experts and interpreters, trainers and consultants.

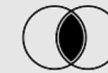
Related Conditions



The integration of cardiometabolic and related conditions.

Diabetes, hypertension, obesity and cardiac diseases are not isolated disease states. We will claim our expertise in these areas of care.

Integration



Driving the integration of diabetes clinical management, self-management education, prevention and support.

Our value proposition is ensuring that person centered care plans incorporate self-management education & on-going support. People with diabetes and cardiometabolic conditions benefit when health delivery is holistic and seamless.

These slides are the property of the presenter. Do not duplicate without written consent.

Strategies Supporting the Vision



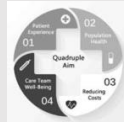
Person-Centered



**Advocating
for equity to
person-
centered care.**

So that every individual with diabetes and cardiometabolic conditions has access to a diabetes educator.

Quadruple Aim



**The optimization
of diabetes care
delivery for the
quadruple aim.**

*Impacting quality, cost,
and both patient and
provider experience.*

Behavioral Health



**The promotion
and integration
of behavioral
health.**

*Promoting strategies
to improve quality of
life.*



AADE Educational Support Advance Skills & Training



These slides are the property of the presenter. Do not duplicate without written consent.

Evolution of Technology



These slides are the property of the presenter. Do not duplicate without written consent.

DANA Mission Statement

DANA (**D**iabetes **A**dvanced **N**etwork **A**ccess)

DANA is a resource to enable professionals working in partnership with persons with diabetes to have access to best in class information about diabetes technology.

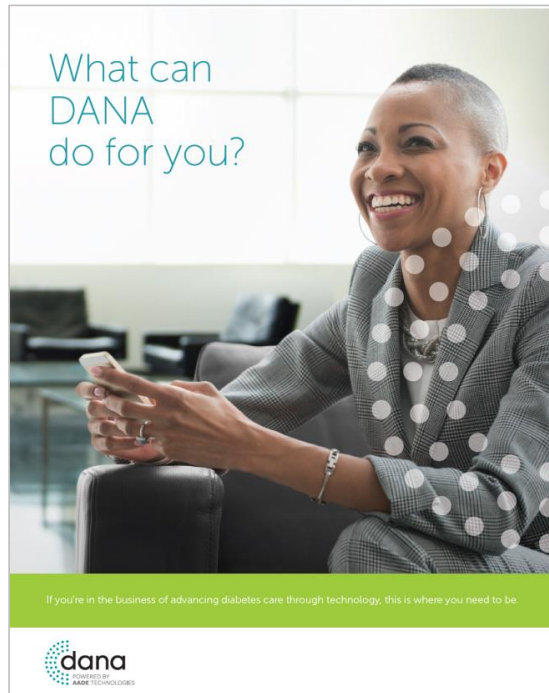
Our goal is to empower collaborative decision making in the care and management of people with diabetes, leading to positive health outcomes.

These slides are the property of the presenter. Do not duplicate without written consent.

What is DANA?

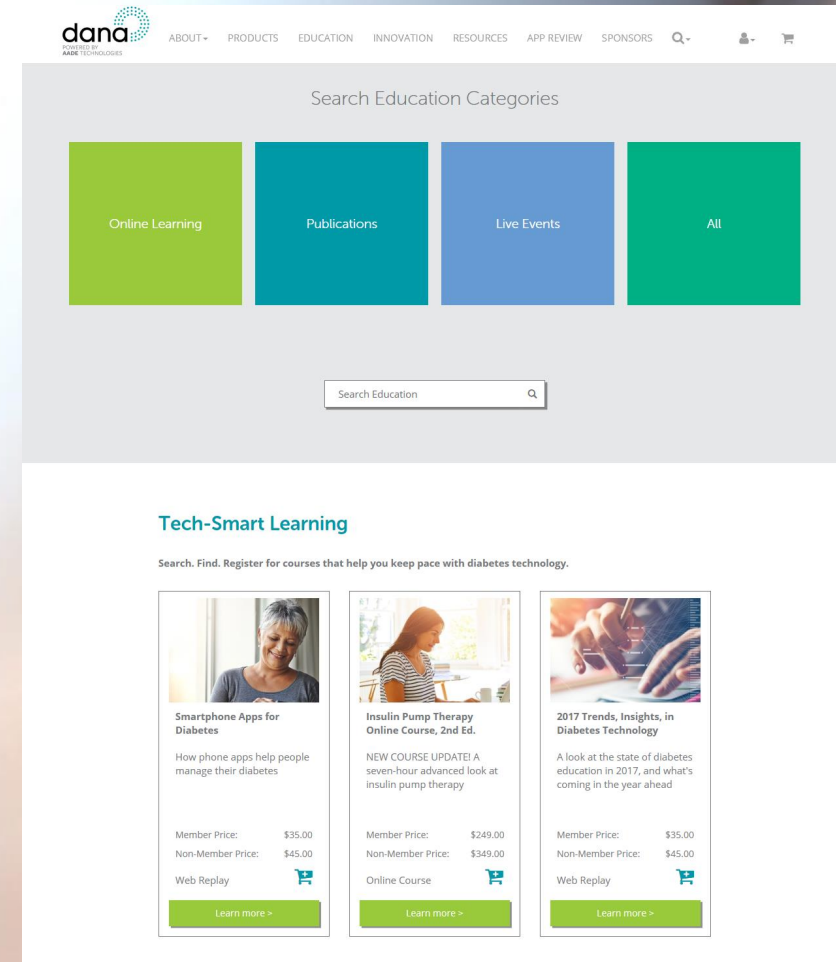
DANA is a robust, always-current destination where members can participate in a variety of areas:

- **Products:** Research and review the latest technology products, devices and mobile apps
- **Education:** Access tech-focused continuing education and device training
- **Innovation:** Participate in innovation-shaping research and learn the latest news
- **Resources:** Search a repository of curated evidence-based research and information

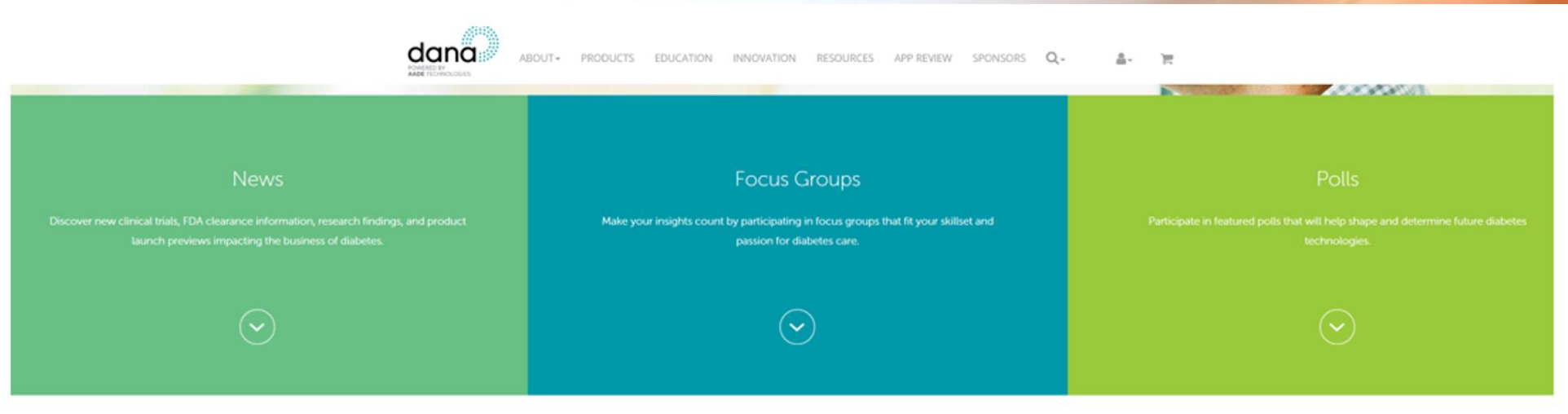


These slides are the property of the presenter. Do not duplicate without written consent.

In the **education section**, Educators will explore on-demand and live courses and webinars for both beginner and advanced levels.

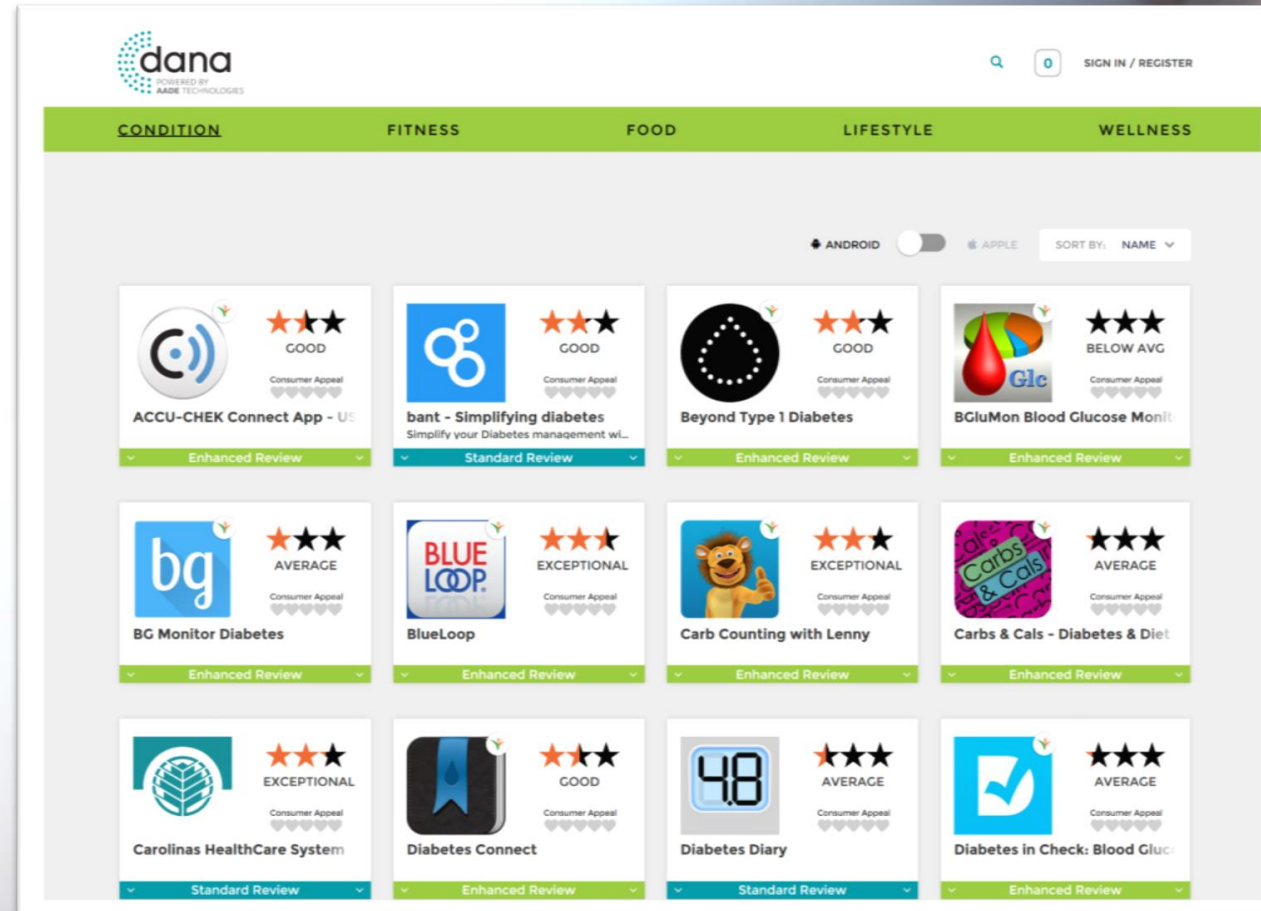


In the **Innovation section**,
Educators can learn more about Innovation
through news stories or participating in Focus
Groups and Polls.



The app review provides a variety of apps in the areas of:

- Condition
- Fitness
- Food
- Lifestyle and
- Wellness



The screenshot shows the 'Resources / All Resources' page on the Dana website. It features a navigation bar with links to ABOUT, PRODUCTS, EDUCATION, INNOVATION, RESOURCES, APP REVIEW, and SPONSORS. Below the navigation bar, there are filters for 'Sort' and 'Any Resource Type', and a search bar. The main content area displays a list of resources, each with a title, a brief description, and a category. The resources listed are:

- Diabetes Self-management Education and Support in Type 2 Diabetes**: A chronic disease that requires a person with diabetes to make a multitude of daily self-management decisions and perform complex care act. Category: Guidelines and Position Statements. Date: 02/25/2018.
- Continuous Subcutaneous Insulin Infusion (CSII) Without and With Sensor Integration**: Continuous subcutaneous insulin infusion (CSII), also known as insulin pump therapy, is in its fifth decade of use and continues to grow in popularity. Category: Guidelines and Position Statements. Date: 02/20/2018.
- Insulin Infusion Sets Teaching Checklist**: Tip Sheets on Insulin Infusion Sets A set of downloadable PDFs for diabetes educators to navigate the complex topic of insulin infusion sets. This r. Category: Practical Tools and Patient Support. Date: 01/01/0001.
- Troubleshooting Infusion Sets**: Insulin pump therapy functions with multiple components including the pump, reservoir, insulin, infusion set and the user. All must work seamlessly to. Category: Practical Tools and Patient Support. Date: 01/01/0001.
- Site Rotation Toolkit**: Just as we rotate and change the tires on a car to prevent uneven tread wear, flats and dangerous blowouts, we must rotate pump infusion sites to prev. Category: Practical Tools and Patient Support. Date: 01/01/0001.
- The Role of the Diabetes Educator in Diabetes Formulary and Medical Device Decisions**: Abstract It is the position of the American Association of Diabetes Educators that diabetes educators should be included as expert consultants for fo. Category: Peer Reviewed Publications. Date: 01/01/0001.
- Telemedicine for Reach, Education, Access, and Treatment (TREAT)**: Purpose The purpose of this study was to examine diabetes-related behavioral and psychosocial outcomes as well as patient satisfaction with the Telem. Category: Peer Reviewed Publications. Date: 01/01/0001.
- How Do Mobile Phone Diabetes Programs Drive Behavior Change?**: Purpose The purpose of this study was to investigate the behavioral effects of a theory-driven, mobile phone-based intervention that combines automat. Category: Peer Reviewed Publications. Date: 01/01/0001.

RESOURCE SECTION

Resources may be:

- A full article
- A toolkit
- A link to a publication

All resources are fully searchable which makes finding the right information quick and reliable.

The screenshot shows a detailed view of a resource on the Dana website. The resource is titled 'Continuous Subcutaneous Insulin Infusion (CSII) Without and With Sensor Integration'. It is sponsored by AADE and was created on 2/20/2018 at 12:00:00 AM. The resource is categorized as 'Continuous Subcutaneous Insulin Infusion (CSII) Without and With Sensor Integration'. Below the title, there is a link to the resource: <https://www.diabeteseducator.org/practiceducator/toolkits/resources>. The resource is also categorized under 'Insulin Pump Therapy Resources' and 'Educator Tools Providing Guidance on Pump and Sensor Training'. A small image of a person using an insulin pump is shown, along with a brief description of the resource: 'Insulin pump therapy is an increasingly popular option for treatment of diabetes, but can be a complex topic for both educators and people with diabetes. Surrounding this topic, we have developed an online course that provides a deep dive into insulin pump therapy, and a set of practical tools and standardized guidelines to help empower diabetes educators to prevent, diagnose, and troubleshoot insulin infusion set problems that contribute to unexplained hyperglycemia.' The permission is granted by AADE.

Advocacy

- Annual Public Policy Forum
- State “Grass Roots” Coordinator
- Alerts through My AADE Network
- Advocacy Updates @ diabeteseducator.org
- 2018-2019 goals:
 - Strengthen relationships with CMS, CDC, and others.
 - Current and future DSMES benefits (HR 5768 & S 3366)
 - Models of care/delivery (telemedicine)
 - Reimbursement (Preventing Diabetes in Medicare Act: HR 3124 & S 1299)

Advocacy

- Goals continued:
 - Examine barriers to access for DSMES
 - Continue dialogue around shortcomings of Competitive Bidding
 - Strengthen knowledge and skills of Advocacy Committee
 - Stronger support from members for grassroots engagement (Fall conference 2018)
 - Support initiatives that advance state-based legislation (State licensure initiative for diabetes educators)
 - Introduce and/or advance legislation to expand referrals



Joint Statement on A1c Guidance from the American College of Physicians

- ADA, AACE, AADE, Endocrine Society all strongly disagree with the proposed new guidance for A1c “from 7-8%”.
- Agreement on individualization of treatment based on patient-specific factors with the aim of protecting those at highest risk.
- 7-8% could prevent many patients from receiving the full benefits of long-term glucose control.
- Also concern that the “broad range is too large to apply to most patients with type 2 diabetes” and has the “potential to do more harm than good” citing increased risk of serious complications as a result of higher A1c levels.

These slides are the property of the presenter. Do not duplicate without written consent.

A1c continued/specifics

- The same international clinical trials were reviewed by each of the organizations, however, ACP's interpretations did not account for the differences in the patient populations of these studies.
- Their recommendations do not consider the positive legacy effects of intensive blood glucose control confirmed in the multiple trials, particularly for those newly diagnosed with type 2 diabetes, and therefore, not reflective of the long-term benefits of lower targets.
- Also ACP's guidance does not consider the positive impact of several newer medication classes demonstrated in more recent trials to improve mortality and morbidity in high-risk patients with type 2.

AADE

- Diabetes Educator is more than “Education”
- Member involvement
- Collaboration
- Long-term vision for the specialty which integrates the clinical and self-management aspects of diabetes care, places an emphasis on cardio metabolic conditions, and positions diabetes educators as technology experts and key players in helping health systems achieve the quadruple aim.