



# Diabetes Self- Management Education and Support (DSMES) in Michigan

**These slides are the property of the presenter. Do not duplicate without written permission.**



## Goals & Objectives

Provide an overview of  
DSMES in Michigan

- ▶ Program locations
- ▶ Program outcomes



## MDHHS & DSMES History

---

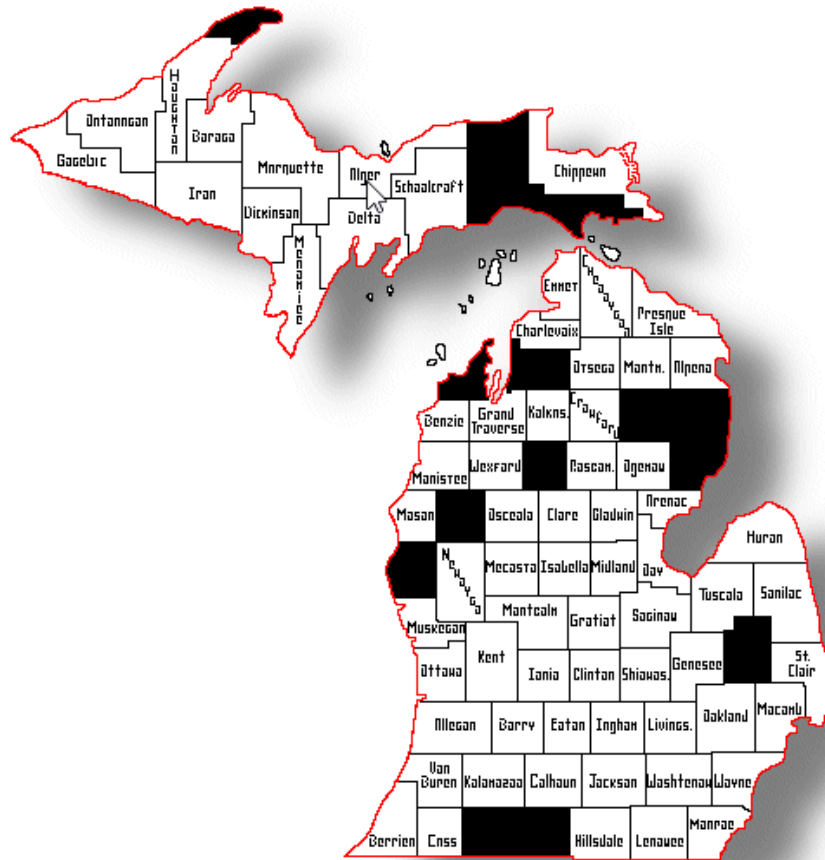
- ▶ 1982 MDCP formed
  - ▶ DSMT Coordinator
- 

**These slides are the property of the presenter. Do not duplicate without written permission.**



Programs in  
Michigan

Hospital based  
programs: 87  
Counties covered: 69



These slides are the property of the presenter. Do not duplicate without written permission.

Figure 1. Referral, Enrollment, and Completion Trends: DSME/T FY'08 to FY'17

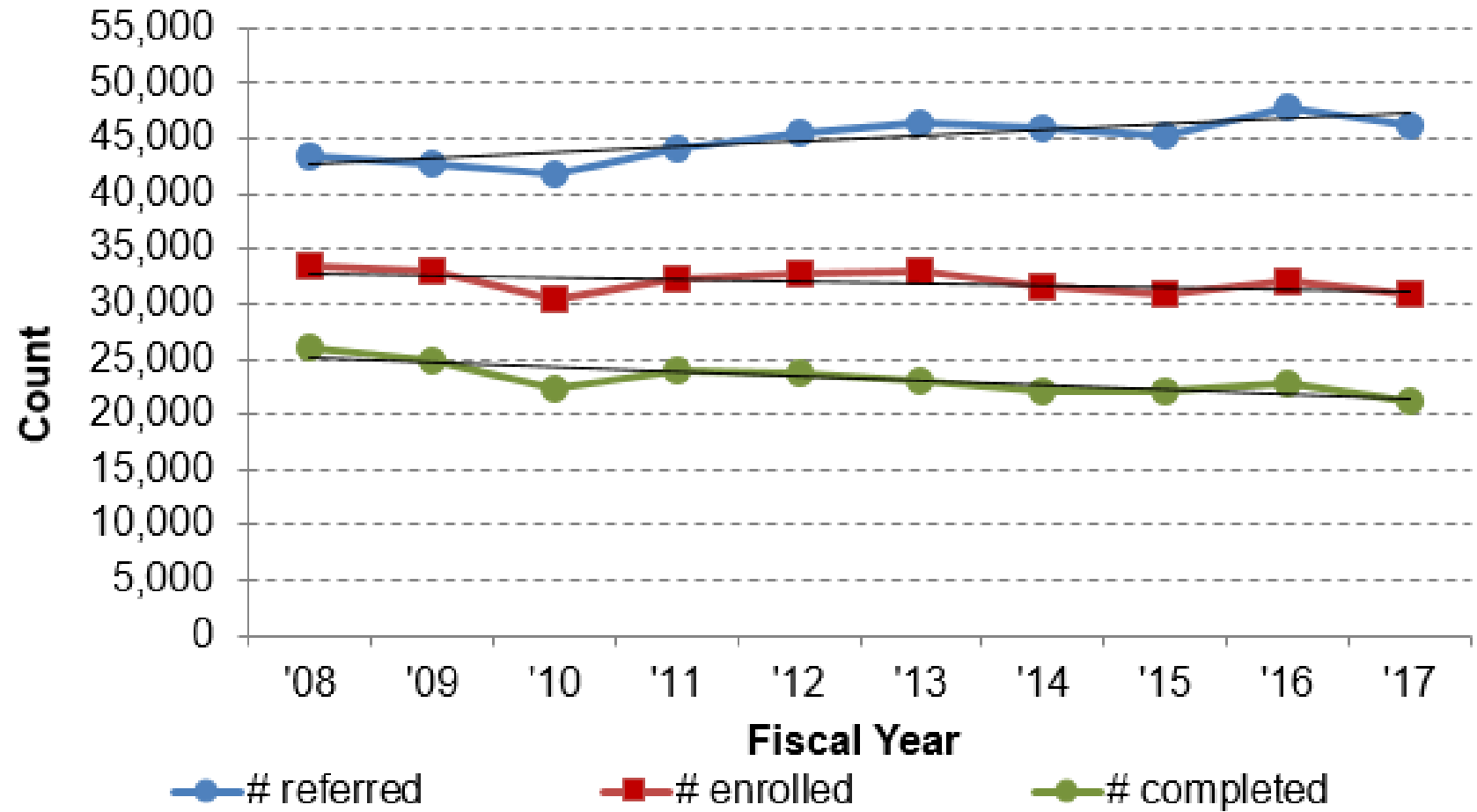
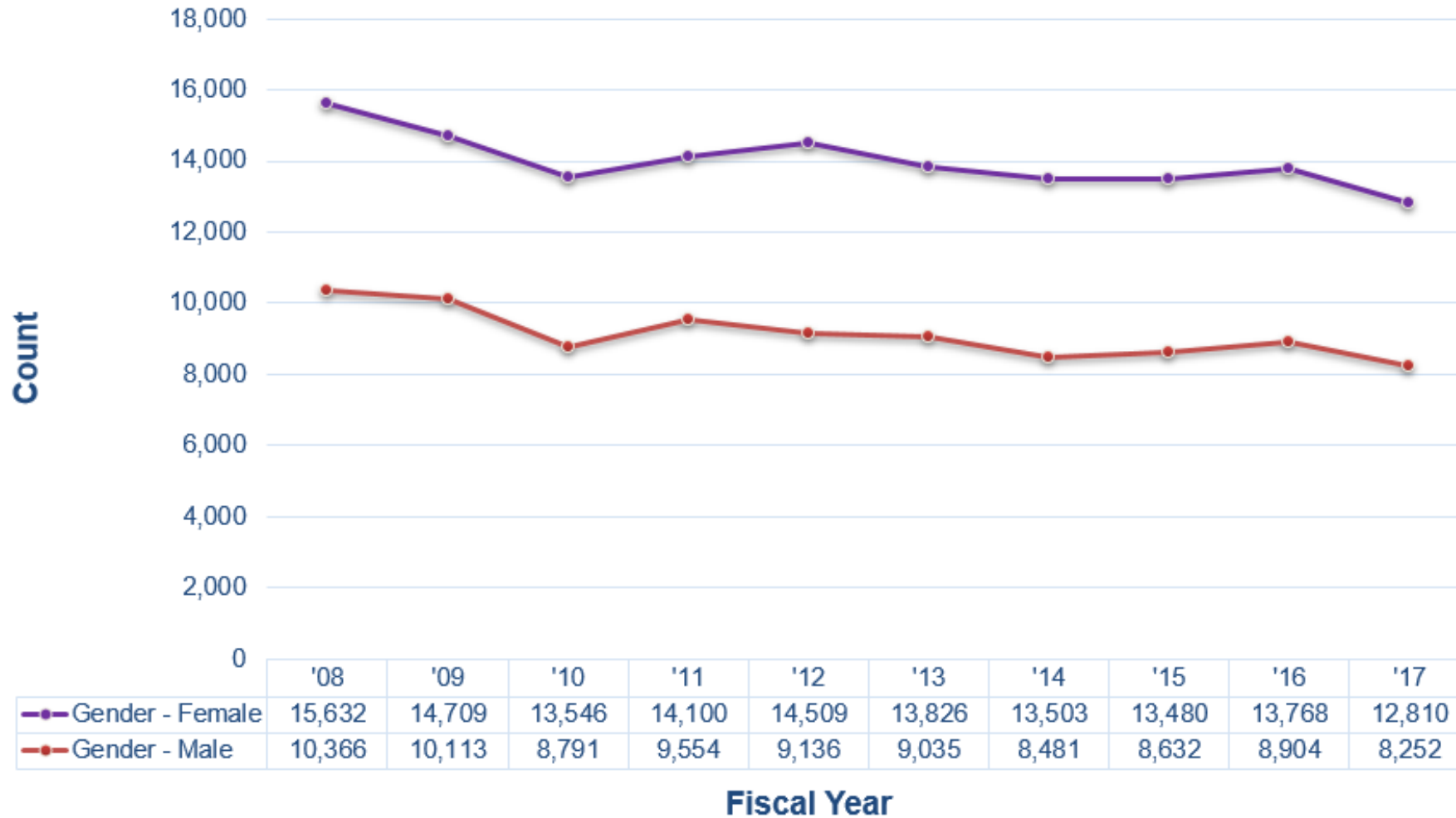
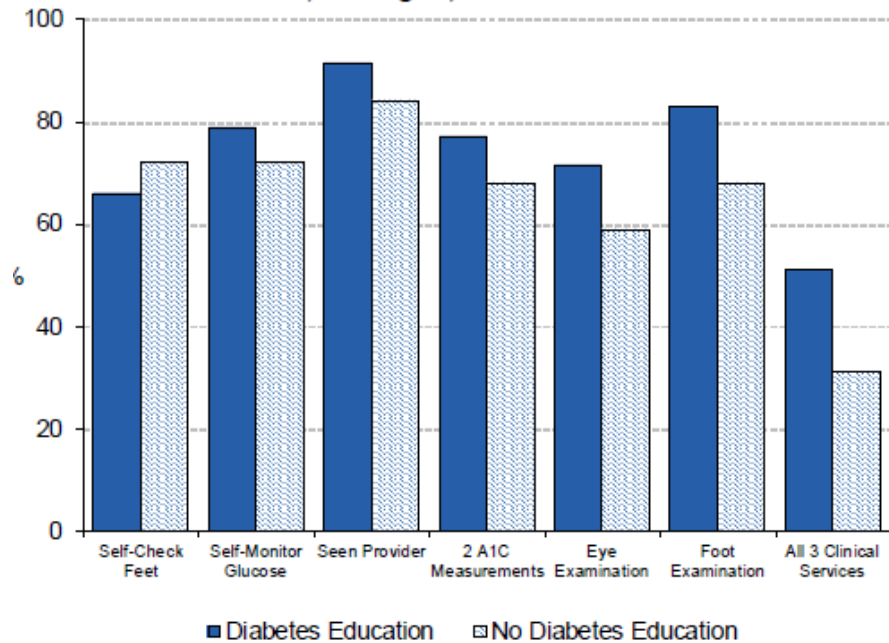


Figure 3. Completion Counts by Gender: DSME/T FY'08-FY'17



**These slides are the property of the presenter. Do not duplicate without written permission.**

Figure 4. Diabetes Management by Formal Diabetes Education, Adult Persons with Diabetes, Michigan, 2011-13 Combined

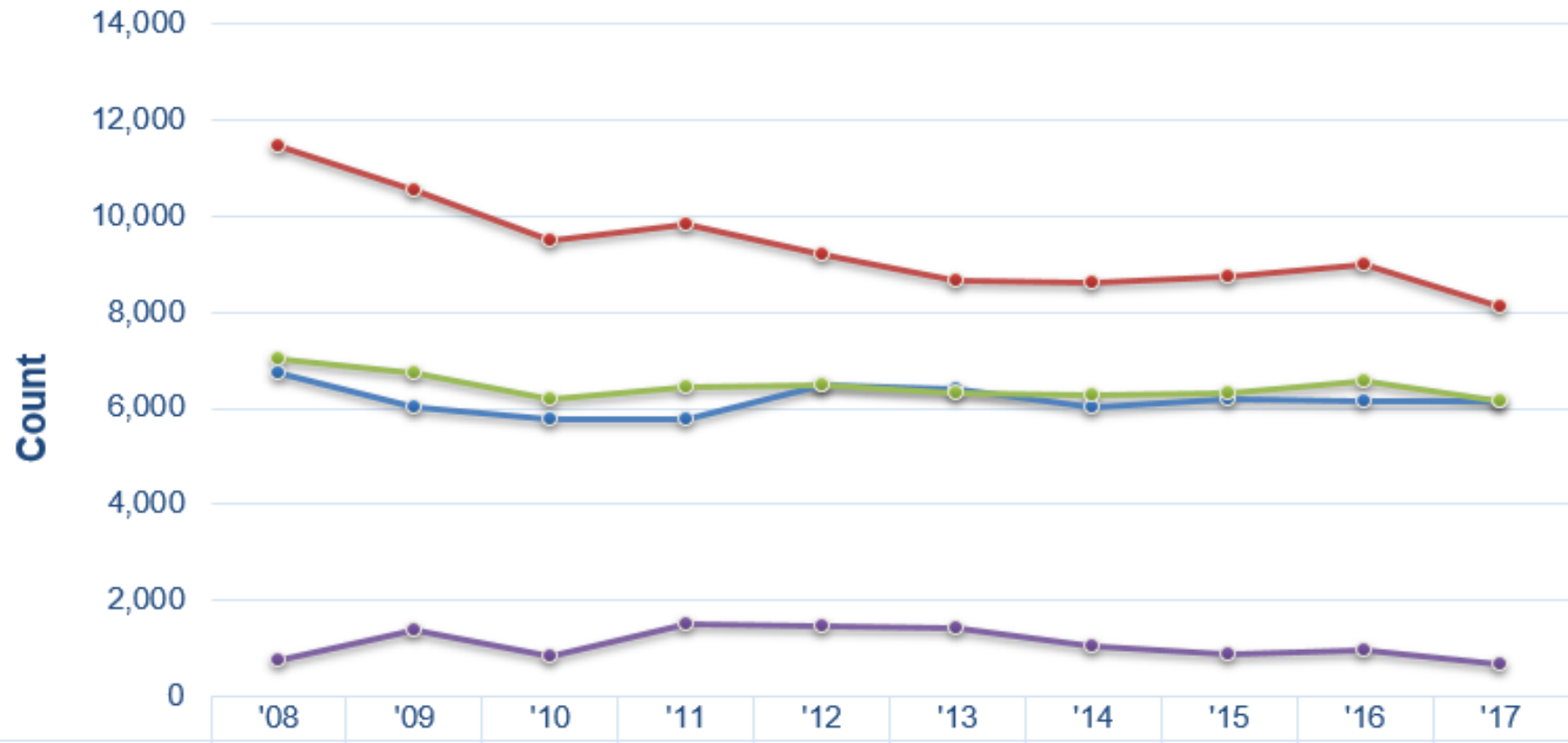


Source: MiBRFSS [www.michigan.gov/brfs](http://www.michigan.gov/brfs)

Diabetes Management by Formal education, adult persons with diabetes, MI, 2011-13 combined

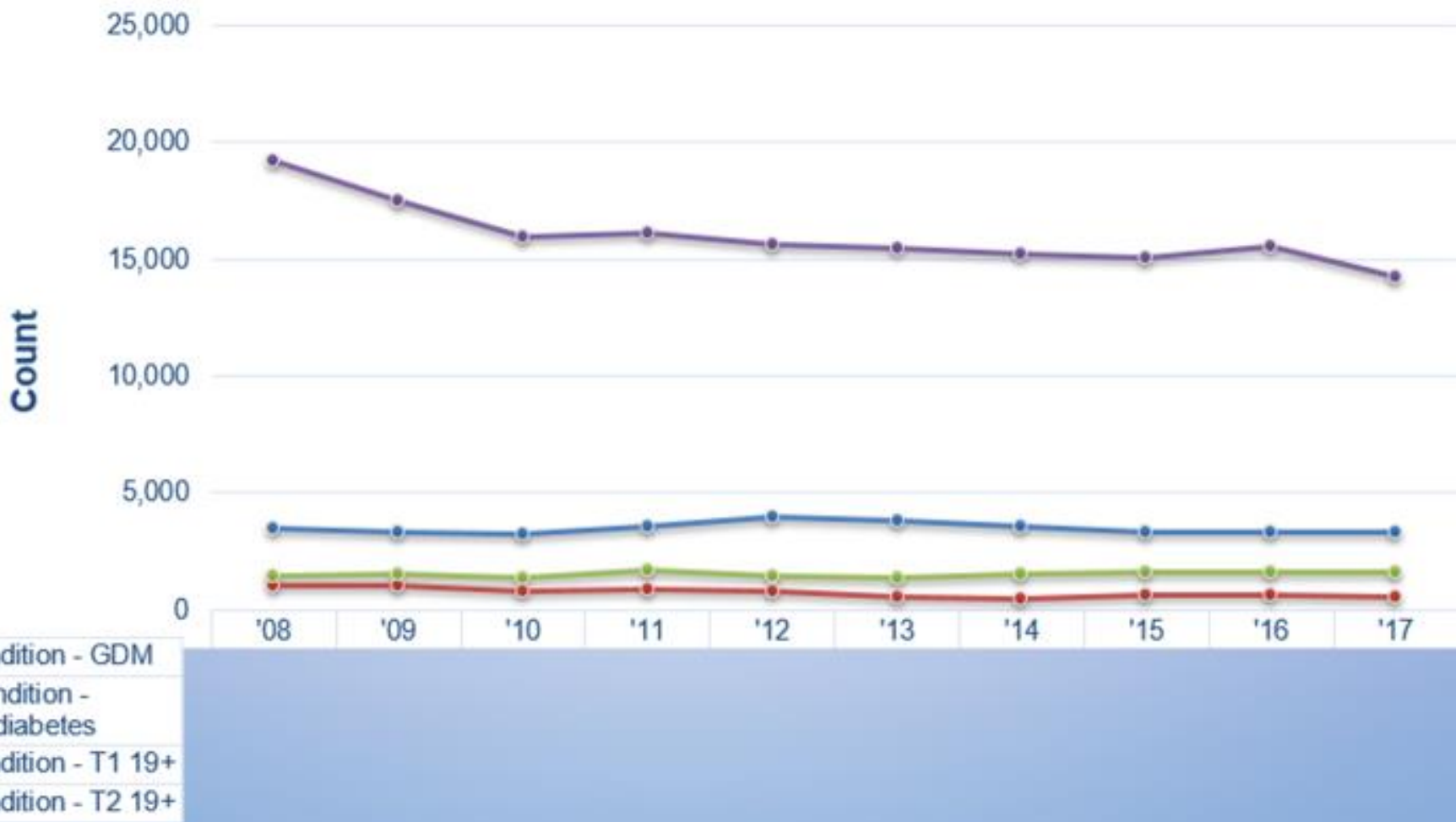


Figure 4. Completion Counts by Age: DSME/T FY'08-FY'17

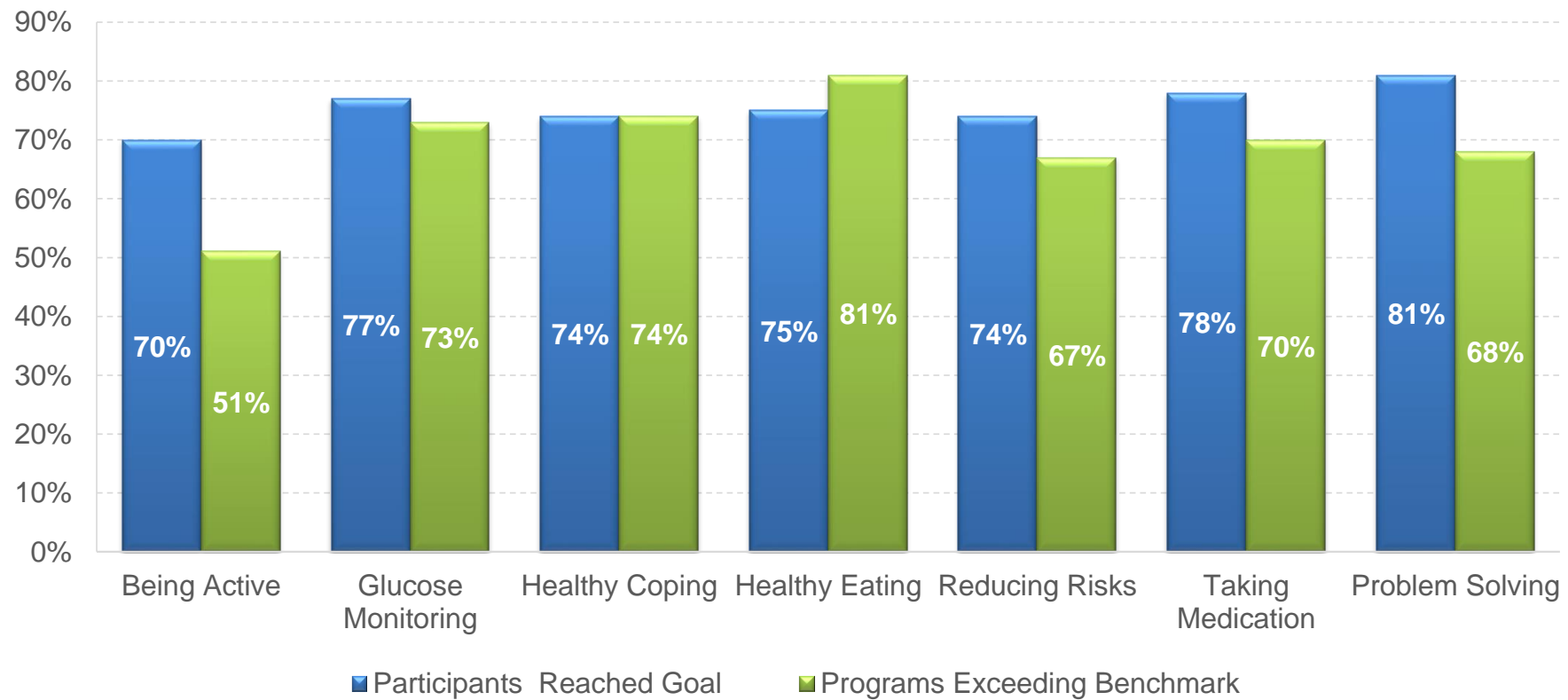


- Age Group - 19-44
- Age Group - 45-64
- Age Group - 65+
- Age Group - Up to 18 yrs

**These slides are the property of the presenter. Do not duplicate without written permission.**



**These slides are the property of the presenter. Do not duplicate without written permission.**



**These slides are the property of the presenter. Do not duplicate without written permission.**

## Key Take-aways

- ▶ Slight (not significant) decrease in referrals
- ▶ Attempting to learn why PWD do not enroll once referred to DSMES
- ▶ Although underutilized, DSMES demonstrates positive outcomes for those who participate



# Questions

???

**These slides are the property of the presenter. Do not duplicate without written permission.**